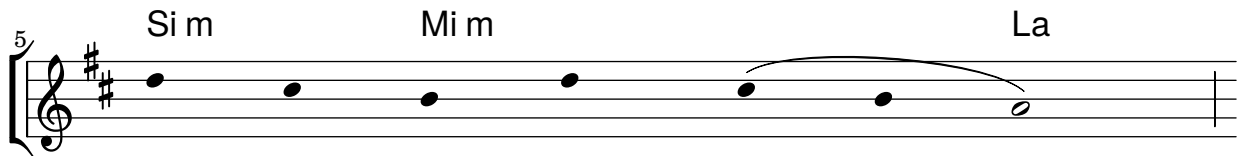


# PANGE LINGUA

CLN 02



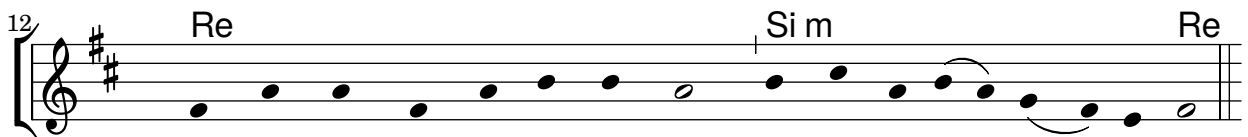
1. Pan-ge lin-gua\_ glo - ri - o - si Cor - po -
2. No-bis da - tus, no - bis na - tus ex\_\_ in -
3. In su - pre-mae\_ noc - te coe - nae re - cum -
4. Verbum ca - ro, pa - nem ve - rum ver - bo
5. Tantum er - go\_ Sa - cra - men - tum ve - ne -
6. Ge - ni - to - ri, Ge - ni - to - que laus\_ et



ris mys - te - ri - um, \_\_\_\_\_  
 tac - ta Vir - gi - ne, \_\_\_\_\_  
 bens cum fra - tri - bus, \_\_\_\_\_  
 car - nem e - ffi - cit: \_\_\_\_\_  
 re - mur cer - nu - i: \_\_\_\_\_  
 ju - bi - la - ti - o, \_\_\_\_\_



Sangi-nis-que pre-ti - o - si, quem in mundi preti - um\_\_  
 et in mun-do con-ver-sa-tus, spar-so ver-bi semi-ne,\_\_  
 ob-ser-va-ta le-ge ple-ne ci - bis in le-ga-li - bus,\_\_  
 fit-que sanguis Christi me-rum, et si sensus de-fi - cit,\_\_  
 et an - ti-qui-um do-cu-mentum no - vo ce-dat ri-tu - i:\_\_\_\_  
 sa-lus, ho-nor, vir-tus quo-que sit et be-ne-dicti - o:\_\_\_\_



fruc-tus ven-tris ge-ne-ro - si Rex e - ffu-dit\_ gen - ti-um.  
 su - i mo - ras in-co-la - tus mi-ro clausit\_ or - di-ne.  
 ci-bum tur-bae du - o - de-nae se dat su-is\_ ma - nibus.  
 ad fir-mandum cor sin-ce-rum so - la fi - des\_ suf - fi - cit.  
 praestet fi - des supplementum sen-su-um de - fec - tu - i.  
 pro - ce - den - ti ab u - tro-que compar sit lau - da - ti - o.

