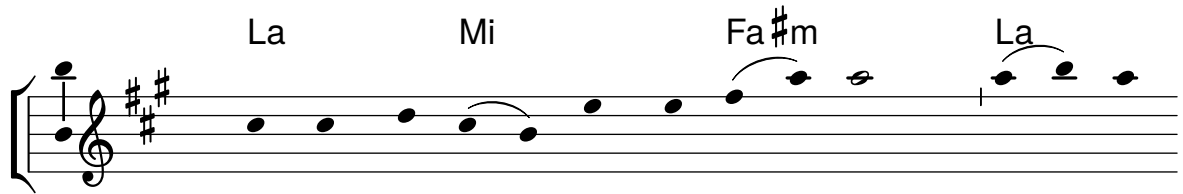
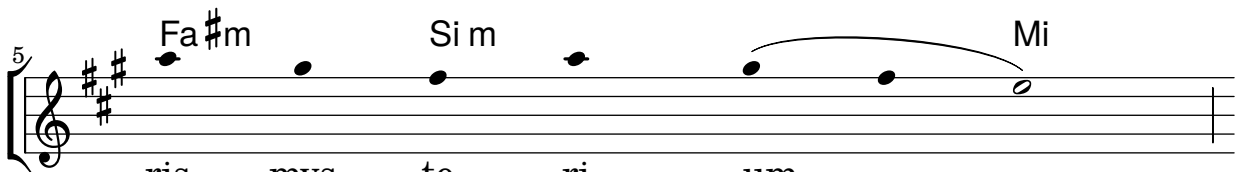


PANGE LINGUA

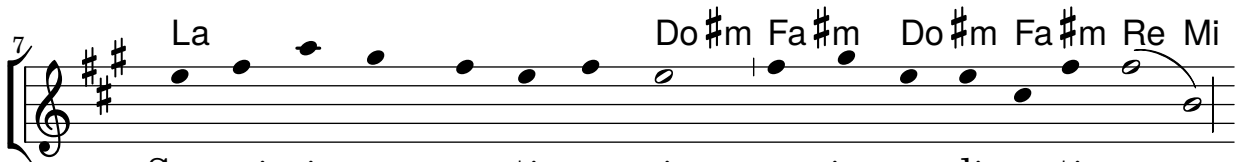
CLN 02



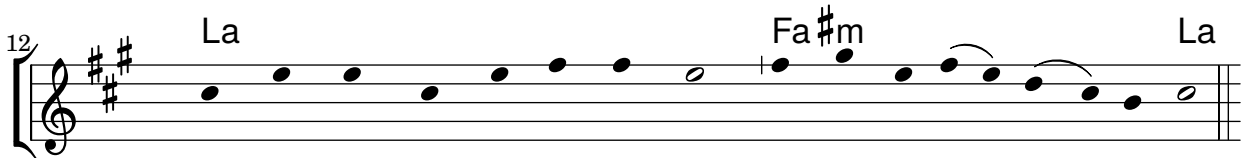
- | | |
|--|------------|
| 1. Pan-ge lin-gua_ glo - ri - o - si | Cor - po - |
| 2. No-bis da - tus, no - bis na - tus | ex__ in - |
| 3. In su - pre-mae_ noc - te coe - nae | re - cum - |
| 4. Verbum ca - ro, pa - nem ve - rum | ver - bo |
| 5. Tantum er - go Sa - cra - men - tum | ve - ne - |
| 6. Ge - ni - to - ri, Ge - ni - to - que | laus_ et |



ris	mys -	te -	ri -	um,
tac -	ta	Vir -	gi -	ne,
bens	cum	fra -	tri -	bus,
car -	nem	e -	ffi -	cit:
re -	mur	cer -	nu -	i:
ju -	bi -	la -	ti -	o,



Sangi-nis-que pre-ti - o - si,	quem in mundi pre-ti - um_
et in mun-do con-ver-sa-tus,	spar-so ver-bi se-mi - ne,
ob-ser-va - ta le-ge ple - ne	ci - bis in le-ga-li - bus,
fit-que sanguis Christi me-rum,	et si sensus de-fi - cit,
et an - ti-quum do-cu-mentum	no - vo ce-dat ri-tu - i:
sa-lus, ho-nor, vir-tus quo-que	sit et be-ne-dic-ti - o:



fruc-tus ven-tris ge-ne-ro - si	Rex e - ffu-dit_ gen - ti-um.
su - i mo - ras in-co - la - tus	mi-ro clausit_ or - di-ne.
ci-bum tur-bae du - o - de - nae	se dat su - is_ ma - nibus.
ad fir-mandum cor sin - ce - rum	so - la fi - des_ suf - fi - cit.
praestet fi - des supplementum	sen - su - um de - fec - tu - i.
pro - ce - den - ti ab u - tro - que	compar sit lau - da - ti - o.

